



GMT MONTHLY MEMBERSHIP PROGRESS REPORT

Results as of: 2/29/2020

GMT Constitutional Area 5 - K, Group L

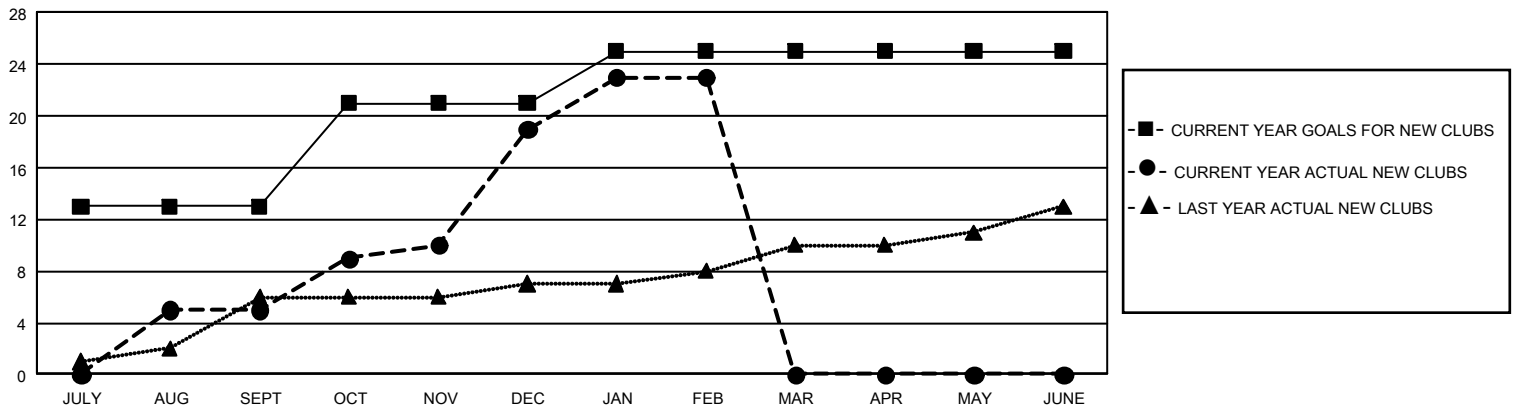
GMT: OPEN

REPORT DOES NOT INCLUDE CLUBS IN UNDISTRICTED AREAS.

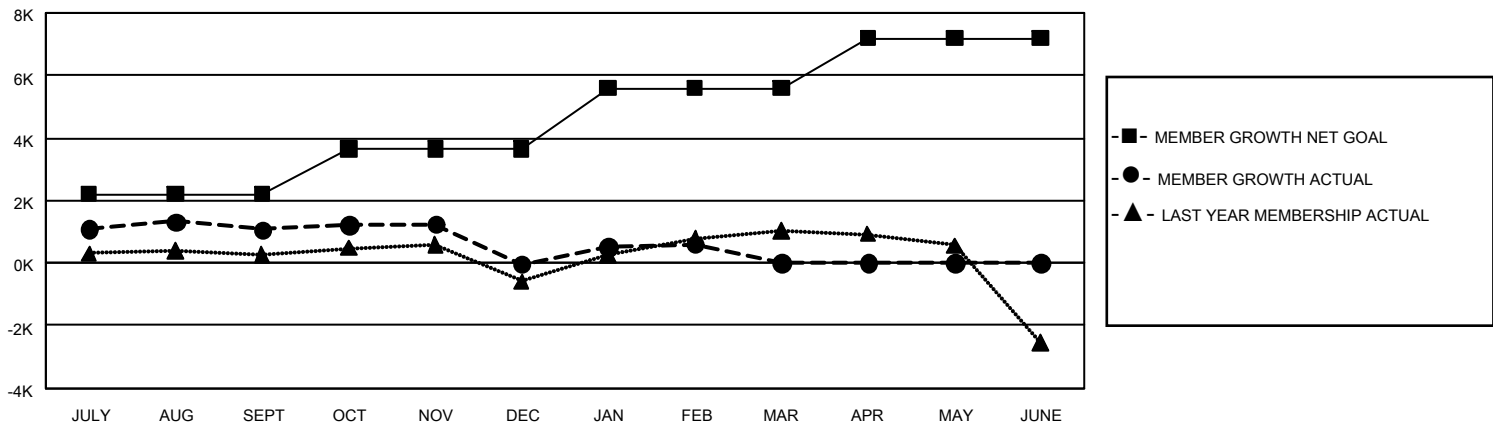
Clubs			
RESULTS FOR 2019-2020			
QUARTER	NEW CLUB GOAL	NEW CLUBS	DROPPED CLUBS
JULY/AUG/SEPT	39	5	3
OCT/NOV/DEC	24	14	1
JAN/FEB/MAR	12	4	25
APR/MAY/JUNE	0	0	0

Members			
RESULTS FOR 2019-2020			
QUARTER	MEMBER GROWTH NET GOAL	MEMBER GROWTH ACTUAL	DROPPED MEMBERS ACTUAL (including transfers)
JULY/AUG/SEPT	6,630	2,781	1,620
OCT/NOV/DEC	4,350	2,008	3,073
JAN/FEB/MAR	5,820	1,267	529
APR/MAY/JUNE	4,770	0	0

GOALS AND ACTUAL NEW CLUBS CUMULATIVE



GOALS AND ACTUAL MEMBERS CUMULATIVE



DROPPED CLUBS: 29	911 CLUBS OF 1,075 ADDED 1 OR MORE NEW MEMBERS	<u>GENDER DISTRIBUTION</u> MALE 35,619 (71.89%) FEMALE 13,927 (28.11%)
<u>DROPPED MEMBERS</u> DECEASED 76 CLUB CANCELLED 55 OTHER 5,091 <hr/> TOTAL 5,222	CLICK HERE FOR CUMULATIVE MEMBERSHIP DATA	TOTAL FAMILY UNIT MEMBERS 5,193 FAMILY MEMBERS PAYING HALF DUES 3,078